



20, 21 and 22 June 2022

Nantes University, France

9th LabEx DRIIHM symposium

PROGRAMME

Photo : V. Coxam, 2018



Monday June 20th

9:00-10:00 - Welcome Coffee

10:00-10:30 - Introduction

Introduction to the three days by A. Decaulne, Director of the OHMi "Nunavik"

Welcome + Introduction by S. Blanc, Scientific and Technical Manager of LabEx DRIIHM and Director of InEE

10:30-12:00 - *"The OHM at the centre of environmental conflicts: shared experiences at the interface of scientific and lay knowledge"* session

Chairmen : Dominique Badariotti et Fabien Hein

An experience of scientific activity in a sensitive environmental context: OHM Estarreja Case study (preliminary title) - by Anne-Marie Guihard Costa (OHMi Estarreja)

The alumina conflict in Gardanne: what role for the OHM BMP? - by Yves Noack (OHM Provence Coalfield)

Collective exchanges with Carole Barthélémy (OHM Rhone valley), Armelle Decaulne (OHMi Nunavik), Didier Galop (OHM Pyrénées haut-Videssos) and François Michel Le Tourneau (OHMi Pima County)

12:00-2:30 - Lunchtime

2:30-4h00 - "Transversal projects" session

Chairman : Yves Noack

2:30-3:00 - *SASI project - Food systems under influence: food, health and the environment in OHM by Priscilla Duboz et Michael Rapinski*

3:00-3:30 - *ENERGON Project - Progress and implementation of transversal project by Sylvie Daviet et Nina Montes de Oca*

3:30-4:00 - *HYDECO Project - Connections, disconnections and reconnections in socio-hydrosystems: Does (in)visibility make the difference? by Anne-Lise Boyer*

4:00 - Coffee Break

4:30-5:30 - Poster session

5:30-6:30 - OHM films (1/2)

"Vues et Voix d'Estarreja" in presence of Fabienne Watteau (OHMi Estarreja)

"MOVE - MOUvements de VERsants au Nunavik" by Jean DER GAZERIAN and 2 others films (waiting for titles) in presence of Laine Chanteloup and Fabienne Joliet (OHMi Nunavik)

Free evening for participants

OHM directors' meeting

DataDRIIHM meeting

Tuesday 21 juin 2022 (1/2)

9:00-12:30 - "2012-2022 - 10 Years of OHM Results" (1/2)

9:00-9:30: *MOVE-Nunavik : MOVEs of VErsants in NUNAVIK : hazards and risks* by Armelle Decaulne et Najat Bhiry

9:30-10:00: *Dilemmas in designing engagement: sharing reflections about Agorarisk* by Sofia Bento, Lúcia Fernandes, Christelle Gramaglia, Teresa Melo, Katrin Erdlenbruch and Cristina Killinger

10:00-10:30: *Stakeholder participation, indicators, assessment, and decision-making: applying adaptive management at the watershed scale (Priliminary title)* by Larry Fisher and Adriana Zuniga

10h30-11h00 - Coffee break

11:00-11:30: *Remediation and biotechnological valorisation of bauxite residues from Gardanne* by Steven Criquet Clement Levard et Blanche Collin

11:30-12:00: *Restoration of the Rhone River: a successful transdisciplinarity within the OHM "Vallée du Rhône"?* by Marylise Cottet et Jérémie Riquier

12:00-12:30: *Multi-century trajectory of the Upper Rhine river hydrosystem through the interdisciplinary study of the fine sediments of its alluvial plain* by Cassandra Euzen* et al.

12:30 -2:00 - Lunchtime

2:00-6:00 - "2012-2022 - 10 Years of OHM Results" (2/2)

2:00-2:30 : *Impact of environmental perturbances on frugivore vertebrate wildlife and dung beetles nearby Saint-Georges-de-l'Oyapock : a review of 2013-2022 results and perspectives* by Pierre-Michel Forget, Christophe Baltzinger, Opale Coutant, Eric Guilbert, Olivier Montreuil et Marie Séguigne

2:30-3:00: *Ecological and human determinants of tick distribution and associated pathogens in two contrasting areas of the Pays de Bitche in Moselle* by Pascale Bauda

3:00-3:30: *Dynamics of ecosystem services and plant diversity over the past 200 years* by Florence Mazier*, Yael Schwartz, Stéphane Binet, Cédric Gaucherel, Didier Galop, François Gillet, Thomas Houet, Emilie Lerigoleur, Clara Plancher, Magali Philippe, Clélia Sirami

3:30-4:00: *Ecosystem restoration in the Sahel: a comparative study of fauna - flora interactions and their evolution over time* by Aliou Guissé, Papa Ibnou Ndiaye et Martine Hossaërt

10h30-11h00 - Coffee break



Tuesday 21 juin 2022 (2/2)

4:30-5:00: *The mangrove in Guadeloupe, an ecosystem suspended to anthropic pressures and climatic hazards* by Michael Vitilingom, Pascal-Jean Lopez

5:00-5:30: *Geographical-environmental interactions in the Exploradores Valley: approaches to settlement, resource exploitation and ways of living in western Patagonia* by Jorge Olea

5:30-6:00: *The lagoon socio-ecosystems: a review of 10 years of research within the OHM Littoral Méditerranéen* by Stéphane Ghiotti, Nathalie Bouttin, Vanina Pasqualini

6:00- 7:00 - OHM Films (2/2)

"Under the bridge" in presence of Damien Davy

"The Great Green Wall", "Food and multipurpose gardens" and "Sociology and market economy" in presence of Gilles Boetsch, Aliou Guisse, Priscilla Duboz, Papa Ibnou Ndiaye and Birane Cisse

8h – Gala dinner – O’Deck restaurant

Wednesday June 22th - AM

9:00-11:30 - "Scientific mediation" session

Chairmen: *Armelle Decaulne, Jean-Yves Lena and Corinne Pardo*

Presentation of the session

9:05-9:25 - *Scientific mediation at the InEE* - David Giron, InEE scientific mediation officer and Floriane Vidal, InEE Com' Cell and creator of Indiscipl'InEE

9:30-10:00 - Mediation actions in 3 OHM: Littoral caraïbe, Nunavik, Pays de Bitche - Round table with *Laine Chanteloup, Fabien Hein, Fabienne Joliet and Pascal-Jean Lopez*

10:00-11:00 - Mediation actions outside OHM

- *Franck Courchamp*, Director of the research team Biodiversity Dynamics & Macroecology, UMR Ecologie Systématique & Evolution CNRS, Université Paris Sud
- *Julie Borgese*, Graphic designer - scientific illustrator

11:00-11:25 - *"Educational issues within the OHM"* by *Jean-Yves Lena* - Trainer, Researcher, ESPE-IUFM Designer - Toulouse 2 University, UMR 5600 GEODE

Conclusion

11h30-11h45 - Coffee break

11h45-12h45 - Closing of the symposium

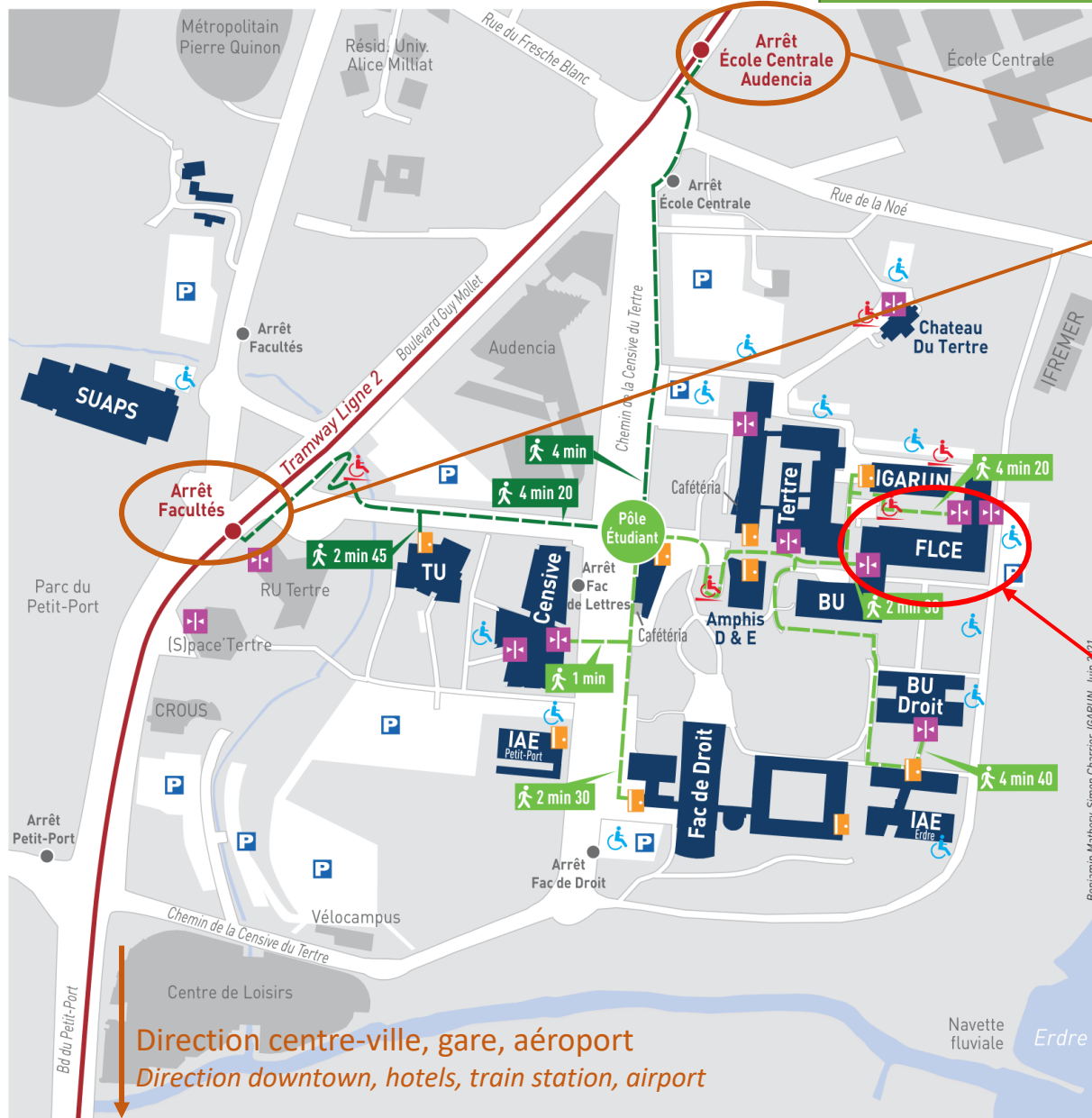
Chairwoman: *Armelle Decaulne*

11:45-12:30 - Discussion with the scientific council of Labex DRIIHM

Poster awards ceremony (Scientific Council Prize, Public Prize and Student/PhD student Prize)

12:30-12:45 - Conclusion by *Armelle Decaulne et Stéphane Blanc*

12:45-14:00 – Lunchtime



Direction centre-ville, gare, aéroport
Direction downtown, hotels, train station, airport

Itinéraires recommandés

- depuis les arrêts de tram
- depuis le pôle étudiant

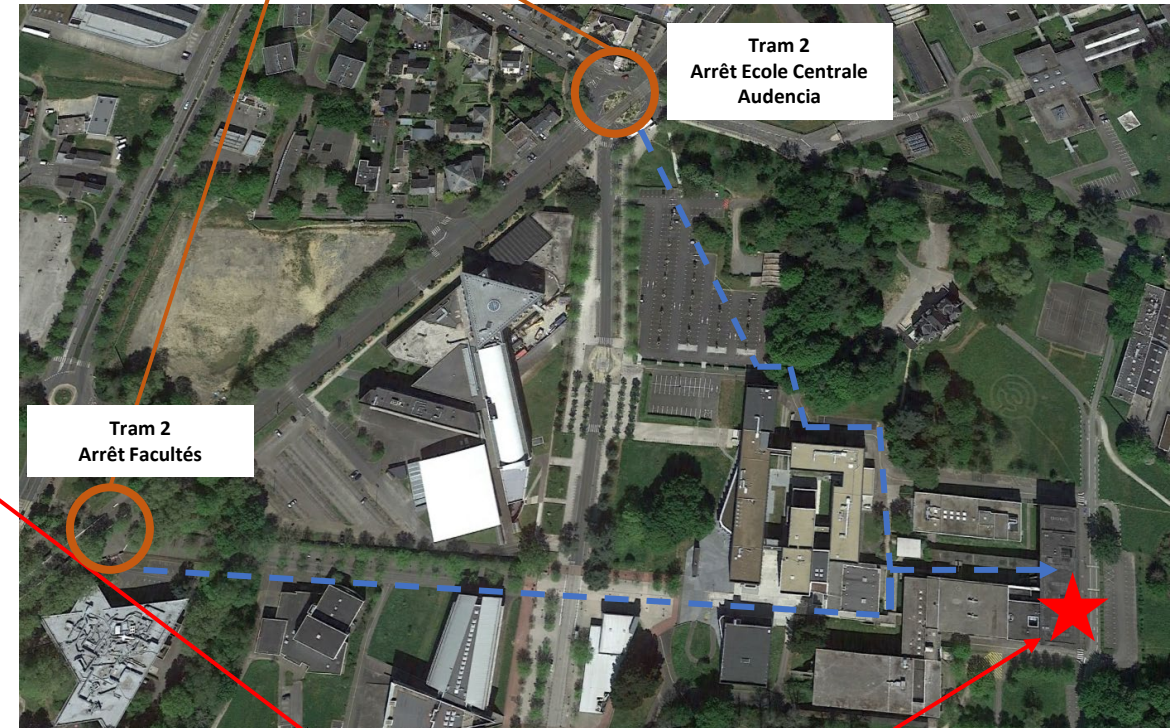
Temps de trajet associés

- 4 min 20 depuis les arrêts de tram
- 4 min 40 depuis le pôle étudiant

- Portes automatiques
- Portes manuelles
- Rampes d'accès

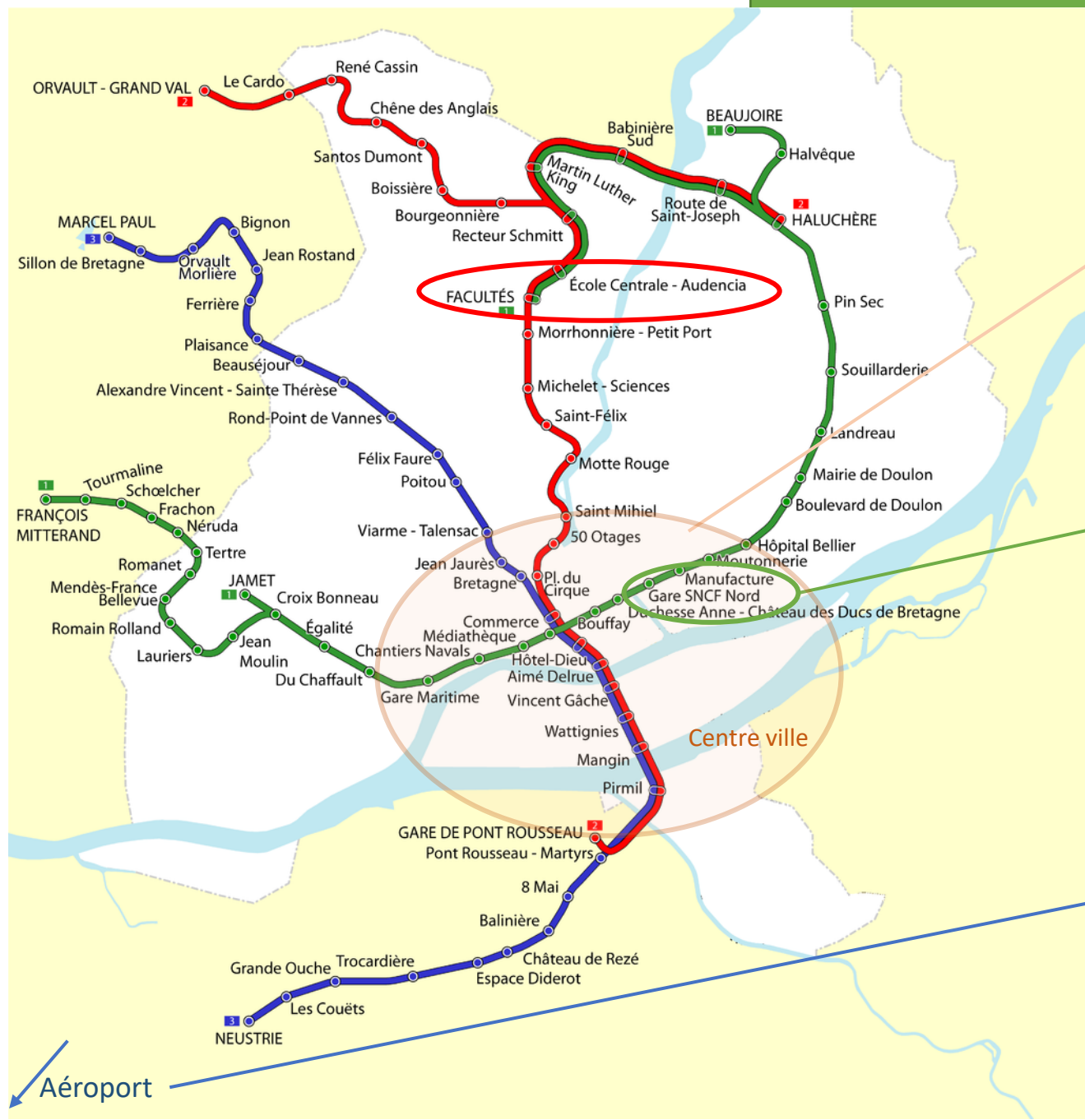
- Places PMR
- Parking

2 arrêts possibles du Tram 2 direction « Orvault-Grand Val »
 2 possible stops of Tramway 2 direction "Orvault-Grand Val"



Lieu du Séminaire
 Symposium location

**Faculté des Langues
 et Cultures Etrangères (FLCE)**
1er étage, salle 506
1st floor, room 506



① Depuis le centre ville

Prendre la ligne 2 direction « Orvault-Grand Val » et descendre soit à « Facultés », soit à « Ecole centrale – Audencia »

From the city center or your hotel, take tramway line 2 in the direction of "Orvault-Grand Val" and get off either at "Facultés" or at "Ecole centrale - Audencia".

② Depuis la gare SNCF

Prendre la ligne 1 direction François Mitterrand, descendre à l'arrêt Commerce – Vous rendre sur la voie du tramway ligne 2 et suivre les consignes ①

From the train station, take tramway line 1 towards "François Mitterrand", get off at the "Commerce" stop - Go to the tramway line 2 and follow the instructions ①

③ Depuis l'Aéroport

Prendre la navette aéroport, descendez à l'arrêt « Hôtel Dieu »
 Passage toutes les 20 minutes du lundi au samedi de 6h15 à 23h15
 Toutes les 30 minutes le dimanche et jour férié de 7h00 à 23h15
 Puis suivre les informations ①

Pour plus d'informations: <https://www.tan.fr/fr/navette-aeroport>

From the airport, take the airport shuttle bus get off at "Hôtel Dieu" stop. Passage every 20 minutes from Monday to Saturday from 6:15 a.m. to 11:15 p.m. Every 30 minutes on Sundays and holidays from 7 a.m. to 11:15 p.m. Then follow the information ①

↙ Aéroport

